

| J&M LEAD SPOTTERS | | |
|----------------------|-------|-----------|
| Specifications | Units | MODEL 230 |
| Hydraulic Extension | Ft. | 20 |
| Manual Extension | Ft. | 0 |
| Extend Force | Lb | 28,000 |
| Retract Force | Lb | 32,000 |
| Retracted Length | Lb | 17 |
| L/R Travel Extended | Ft. | 35 |
| L/R Force Extended | Lb | 12,000 |
| L/R Travel Retracted | Ft. | 15 |
| L/R Force Retracted | Lb | 25,900 |
| Maximum Width | Ft. | 8 |
| Maximum Pressure | PSI | 2,500 |
| Weight | Lb | 8,500 |

MATERIAL: ~

SCALE: 1/56

DWN. BY: KSE
DATE: 10/14/03

MODEL 230 LEAD SPOTTER

DESCRIPTION GENERAL ARRANGEMENT

VIEW M

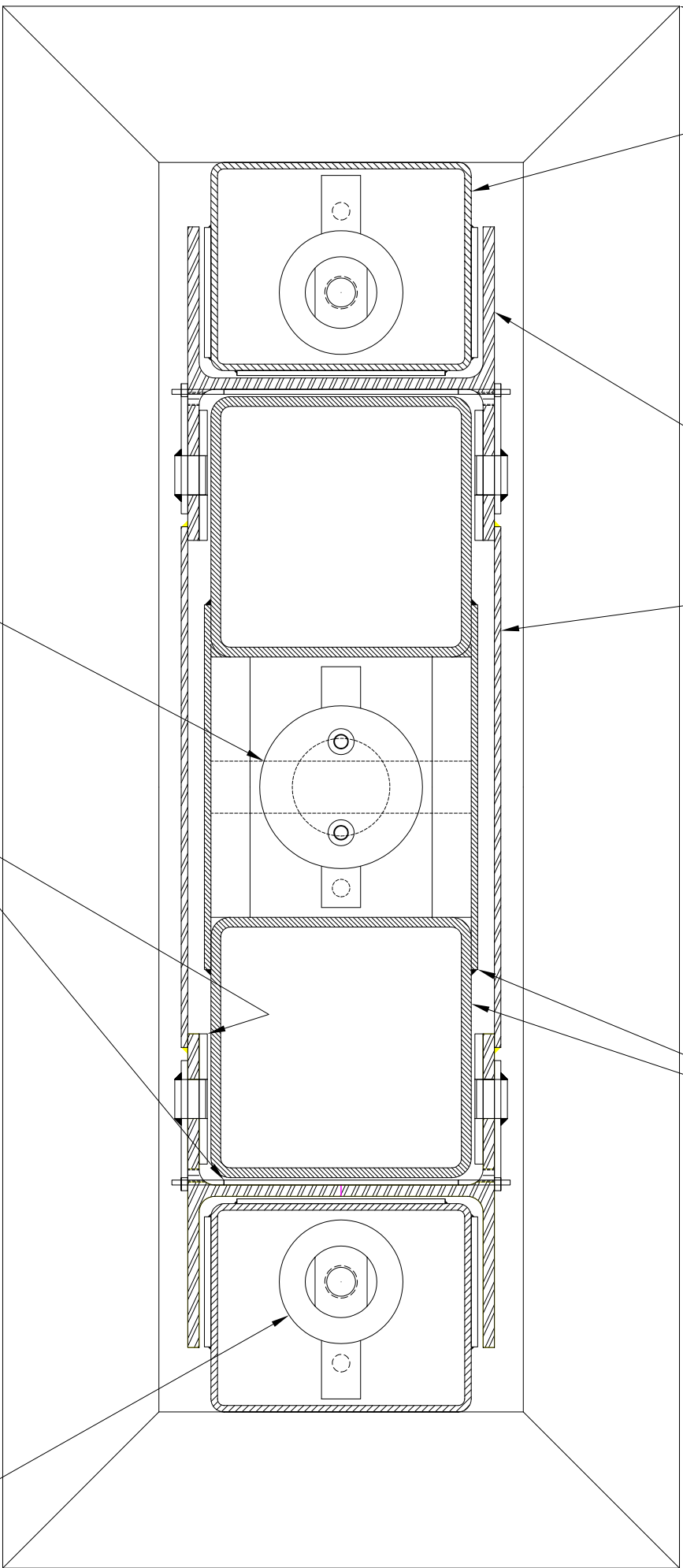


FOUNDATION EQUIPMENT LLC
PITTSBURGH, PENNSYLVANIA

REAR SECTION

MID SECTION

FRONT SECTION



5.50" Ø CYLINDER

WEAR PADS
(REPLACEABLE)

4.00" Ø CYLINDER
2 PLACES

MATERIAL: ~

SCALE: 1/6

DWN. BY: KSE
DATE: 10/13/03

MODEL 230 LEAD SPOTTER

DESCRIPTION
GENERAL ARRANGEMENT

VIEW
A



FOUNDATION EQUIPMENT LLC
PITTSBURGH, PENNSYLVANIA